

# Engaging hard-to-reach populations in childhood disability research

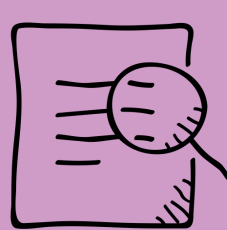


## Why are we doing this?

Lack of research on the process of engagement in childhood disability (particularly hard-to-reach populations)



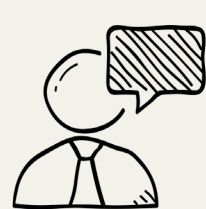
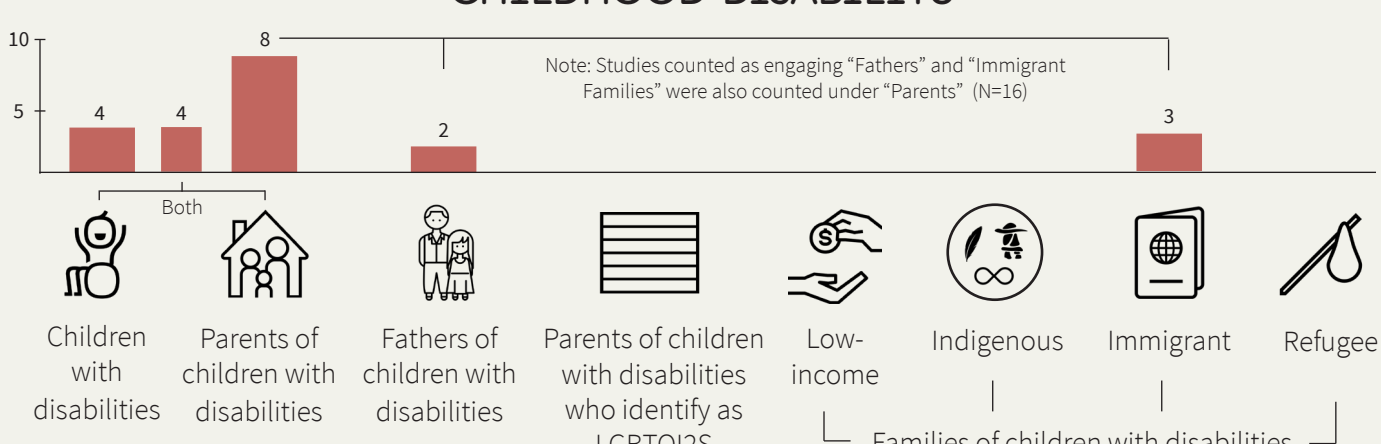
## What is the purpose?



Identify strategies used to engage hard-to-reach populations and how they were evaluated

## What were the main findings?

### STUDIES ADDRESSING HARD-TO-REACH POPULATIONS IN CHILDHOOD DISABILITY

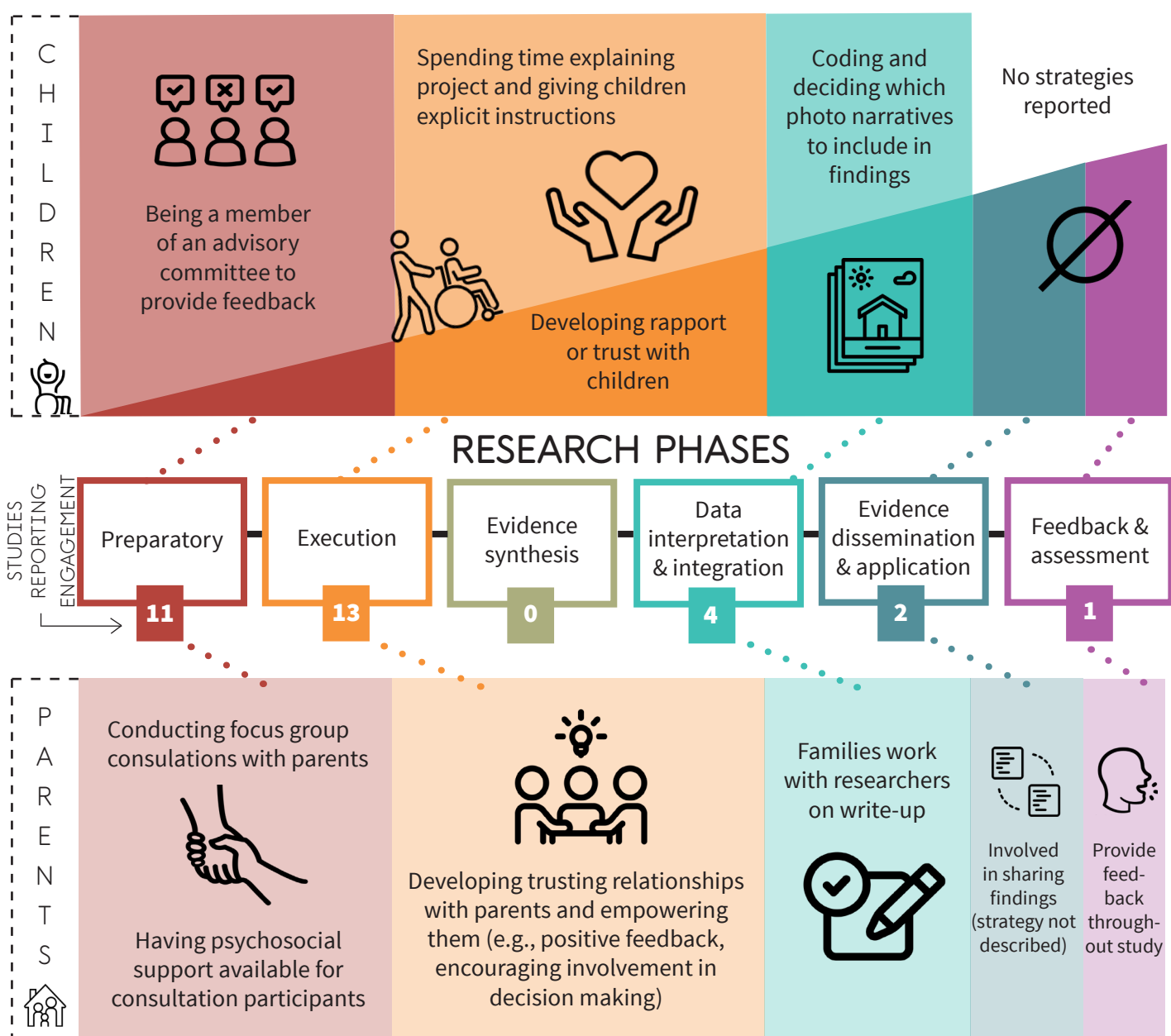


Only anecdotal evidence was used to report evaluation of engagement strategies and outcomes



Engagement was more common in the early stages of the research process

## What engagement strategies were used?



## What does our parent-partner recommend?

### FOR PARENT-PARTNERS

- Understand the research phase they will be engaging in
- Think about the research phase where they would like to contribute
- Ask questions about time commitment and expected contribution at each phase

### FOR RESEARCHERS

- Be open to different means of communication
- Identify tasks for parent-partners at each stage of the process
- Share information about each research phase and their importance

## What are the next steps?



Systematically report and examine effectiveness of engagement strategies and outcomes



Use quantitative and mixed methods approaches to study engagement



Develop strategies to engage hard-to-reach populations

